

# Physical Features Vocabulary

**SSWG 1a** Describe the concept of place by explaining how physical characteristics such as landforms, bodies of water, climate, soils, natural vegetation, and animal life are used to describe a place.

# Physical Features Vocabulary

## Mountain

- \* Mt. Everest



- \* Land that rises many feet into the air and is higher than a hill or surrounding area

## Desert

- \* Sahara



- \* A dry area that receives so little rain that few plants or animals can survive there

# Physical Features Vocabulary

Island

Ocean

\* Australia



\* A body of land surrounded on all sides by water

\* Atlantic Ocean



\* A large area of saltwater

# Physical Features Vocabulary

## River

- \* Amazon River



- \* A large amount of flowing fresh water to a lake or ocean

## Plain

- \* Northern European Plain



- \* Large area of flat or gently rolling land

# Physical Features Vocabulary

## Lake

- \* Lake Victoria



- \* A body of freshwater that is completely surrounded by land

# Physical Features Vocabulary

## Coast

- \* Gulf Coast



- \* Area of land that meets a large body of water

## Coral Reef

- \* Great Barrier Reef



- \* Underwater limestone and coral deposits

# Physical Features Vocabulary

## Sea

- \* Mediterranean Sea, Dead Sea



- \* Part of an ocean that has been identified as an individual body of water; or a saltwater lake

## Bay

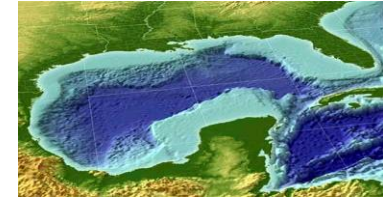
- \* San Francisco Bay



- \* An area of ocean, sea or lake that extends into land; smaller than a gulf

## Gulf

- \* Gulf of Guinea

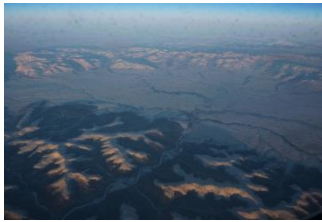


- \* A large part of ocean that extends into the land and is larger than a bay

# Physical Features Vocabulary

## Basin

- \* Congo River Basin



- \* A long low lying area that is usually surrounded by hills or mountains; usually around a river

## Valley

- \* Great Rift Valley



- \* An area of land that is lower than the surrounding land.

## Canyon

- \* Grand Canyon



- \* A deep and narrow valley often with a river on its floor



# Physical Features Vocabulary

## Strait

- \* Strait of Gibraltar



- \* A narrow body of water that connects two larger bodies of water

## Channel

- \* English Channel



- \* A wide strait between a continent and an island

# Physical Features Vocabulary

## Canal

- \* Suez Canal



- \* Man made waterway with a purpose

## Peninsula

- \* Arabian Peninsula



- \* A piece of land that extends out into the water and is almost completely surrounded by water

# Physical Features Vocabulary

## Range

- \* Himalayan Range



- \* A chain of mountains forming a single system.

## Plateau

- \* Deccan Plateau



- \* Large area of level land that is higher than the land surrounding it

# Physical Features Vocabulary

## Archipelago

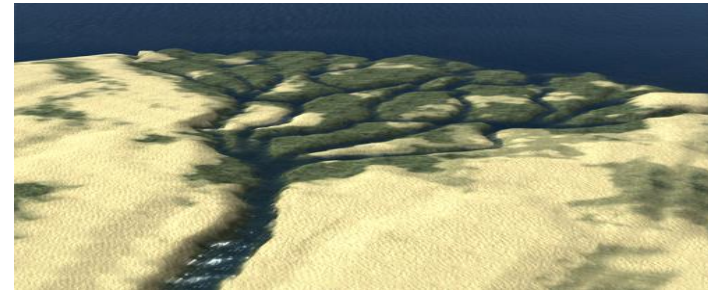
### \* Hawaii



- \* A chain of island or set of islands grouped together

## Delta

### \* Yellow River Delta



- \* Often triangular shaped alluvial deposition area at the mouth of a river

# Physical Features Vocabulary

## Isthmus

- \* Isthmus of Panama



- \* Narrow strip of land with water on both sides